

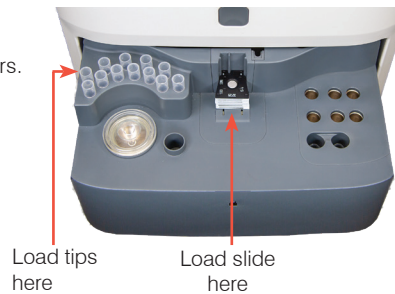
Quick Reference Guide

Storage and handling requirements

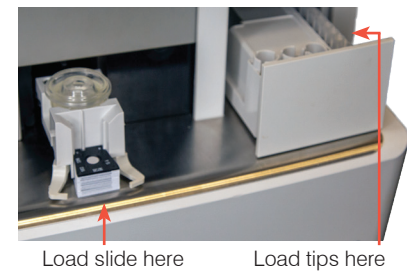
- Store in the freezer (do not store in the freezer door).
- No warming required—run directly from the freezer.
- SDMA tests can be stored at room temperature for up to 8 hours. After 8 hours, store SDMA tests in the freezer.
- Recommended sample volume:
 - Whole blood: 600–800 μL
 - Serum/plasma: 100 μL
(65 μL minimum; 300 μL if running with other slides)

Just load and go!

Catalyst One*



Catalyst Dx*



Frequently asked questions

Question	Answer
Do I need to run anything with the SDMA slide?	SDMA can be run alone as a single slide.
What sample types can be run on the SDMA test?	Compatible sample types include serum, lithium heparin plasma, and whole blood using the Catalyst* Lithium Heparin Whole Blood Separator.
Can I run previously frozen samples on the SDMA test?	No, frozen samples should not be used when running the Catalyst SDMA Test.
Which species have been validated for the SDMA test and what are the numerical results?	Canine and feline species are supported with SDMA. Numerical results between 0–100 $\mu\text{g}/\text{dL}$ will be reported.
Can SDMA be run with other slides?	Yes! The test can be run alone or with other slides as part of a comprehensive patient profile. For example, you could run a Catalyst* Lyte 4 CLIP, a Catalyst* Chem 17 CLIP, a Catalyst* Total T ₄ Test, and a Catalyst* SDMA Test with one patient sample.
When running with other slides, should the SDMA test be loaded in a particular order?	<ul style="list-style-type: none"> • The SDMA slide can be run in any order after electrolytes. • When running SDMA with electrolyte slides, always load the electrolyte slides first. • For the quickest time to results for SDMA, the recommended load order is Lyte 4 CLIP on the bottom, followed by a chemistry CLIP (e.g., Chem 17, Chem 10, etc.), SDMA, any additional slides, and TT₄ on top. • Be sure to load the drawer with pipette tips before every run. (The maximum number of slides per run is 25 slides.)
What is the run time for the SDMA test?	SDMA results are available ~8 minutes after the start of the run.
Is it okay to dilute samples that are undergoing SDMA testing?	IDEXX does not support the use of diluted samples when running the Catalyst SDMA Test.
How often can SDMA tests be left at room temperature and then returned to the freezer?	Once at room temperature, SDMA tests can be returned to the freezer up to 5 times as long as they are unopened.
What if an SDMA test is accidentally refrigerated?	Any test suspected of being refrigerated should be discarded.
Which quality control should I use to monitor the performance of the SDMA test?	VetTrol* Control is designed for use in monitoring the accuracy of the Catalyst Dx and Catalyst One analyzers. IDEXX also recommends monthly analyzer maintenance to ensure the accuracy of these analyzers.