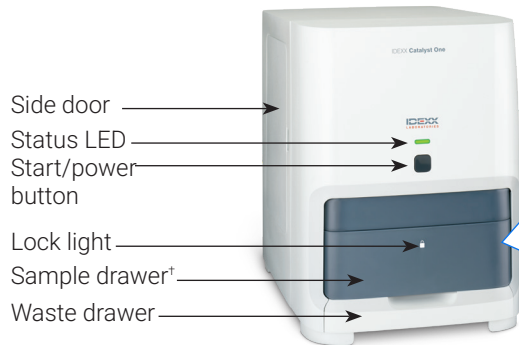


Catalyst One Chemistry Analyzer

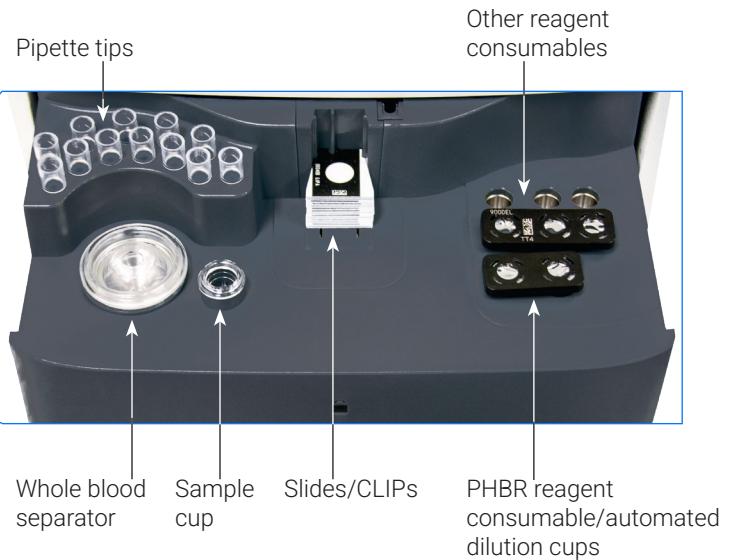
Quick Reference Guide

Note: For detailed instructions on using your Catalyst One™ Chemistry Analyzer, see the *IDEXX Catalyst One™ Chemistry Analyzer Operator's Guide*.

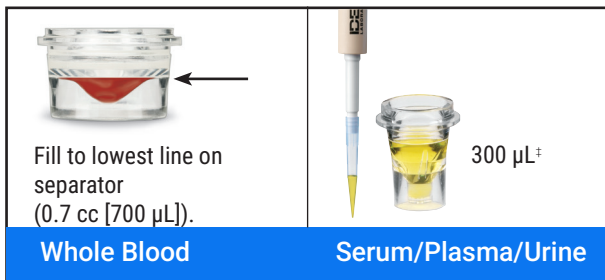
Catalyst One Analyzer Components



†The sample drawer photo (shown at right) is for reference purposes only. Not all consumables should be loaded for a single run (for example, never load both a whole blood separator and a sample cup).



Sample Volume Required



‡ The sample volume required varies depending on the number of slides being run. For more information, see the Catalyst One Operator's Guide.

Running a Sample

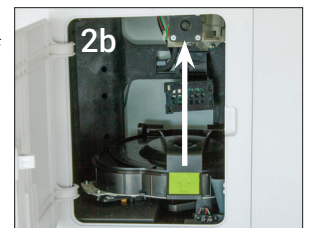
1. Enter the sample information on the IDEXX VetLab™ Station.
2. Load the slides and sample in the sample drawer.
3. Close the sample drawer and press the Start button on the analyzer.

Dilutions

The Catalyst One analyzer supports automated dilutions (the analyzer mixes the sample and diluent for you) and manual dilutions (you prepare the dilution outside of the analyzer). **Do not dilute samples that are undergoing ammonia, phenobarbital, fructosamine, total T₄, SDMA, pancreatic lipase, progesterone, bile acids, cortisol, or electrolyte testing.**

Cleaning the Internal Components (Monthly)

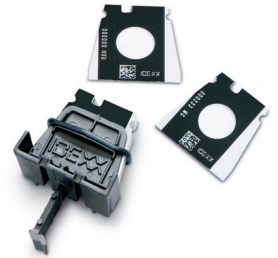
1. Tap the **Catalyst One** icon on the IDEXX VetLab Station Home screen.
2. Tap **Maintenance**, tap **Clean**, and follow these on-screen instructions.
 - a. Open the side door on your analyzer.
 - b. Raise the carousel cover until the green lever magnetizes itself to the inside of the analyzer.
 - c. Remove the carousel.
 - d. Using an IDEXX-supported alcohol prep pad, wipe the incubator ring and optics window.
 - e. Clean the reference tile on the carousel.
 - f. Using an IDEXX-supported dry optical tissue, dry the optics window and reference tile.
 - g. Replace the carousel, lower the carousel cover until it firmly clicks in place, and close the side door.
 - h. Tap **Done**.



Running Quality Control

1. Tap the **Catalyst One** icon on the IDEXX VetLab Station Home screen.
2. Tap **Maintenance**.
3. Tap **SmartQC**.
4. Tap **Run SmartQC**.
5. Follow the on-screen instructions for loading the Catalyst™ SmartQC™ Control materials and completing the run.

Catalyst CLIPs and Slides



Chemistry	Abbreviation	Chem 18 CLIP	Chem 17 CLIP	Chem 16 CLIP	Chem 15 CLIP	Chem 11 CLIP	Chem 10 CLIP	Equine 15 CLIP	NSAID 7 CLIP	NSAID 6 CLIP	UPC Panel†	Lyte 4 CLIP	Individual Slides
Albumin	ALB	✓	✓	✓	✓	✓	✓	✓					✓
Alkaline phosphatase	ALKP	✓	✓	✓	✓	✓	✓	✓	✓	✓			✓
Alanine aminotransferase	ALT	✓	✓	✓	✓	✓	✓		✓	✓			✓
Amylase	AMYL	✓	✓										✓
Aspartate aminotransferase	AST							✓	✓	✓			✓
Bile acids	BA												✓
Blood urea nitrogen	BUN	✓	✓	✓	✓	✓	✓	✓	✓	✓			✓
Calcium	Ca	✓	✓	✓	✓			✓					✓
Cholesterol	CHOL	✓	✓	✓	✓								✓
Cortisol‡	CORT												✓
Creatine kinase	CK							✓					✓
Creatinine	CREA	✓	✓	✓	✓	✓	✓	✓	✓	✓			✓
Chloride	Cl											✓	
C-reactive protein‡	CRP												✓
Fructosamine‡	FRU												✓
Gamma-glutamyltransferase	GGT	✓	✓	✓	✓			✓					✓
Glucose	GLU	✓	✓	✓	✓	✓	✓	✓					✓
Potassium	K											✓	
Lactate	LAC												✓
Lactate dehydrogenase	LDH							✓					✓
Lipase	LIPA	✓	✓										✓
Magnesium	Mg												✓
Sodium	Na											✓	
Ammonia	NH ₃												✓
Phenobarbital‡	PHBR												✓
Inorganic phosphate	PHOS	✓	✓	✓	✓								✓
Pancreatic lipase‡	PL												✓
Progesterone	PROG												✓
Symmetric dimethylarginine‡	SDMA	✓		✓		✓			✓				✓
Total bilirubin	TBIL	✓	✓	✓	✓			✓					✓
Total protein	TP	✓	✓	✓	✓	✓	✓	✓					✓
Total T ₄ ‡	TT4												✓
Triglycerides	TRIG												✓
Urine creatinine	UCRE										✓		
Urine protein	UPRO										✓		
Uric acid	URIC												✓

†Validated reference intervals for equine and “other” species are unavailable.

‡Validated reference intervals for feline, equine, and “other” species are unavailable.